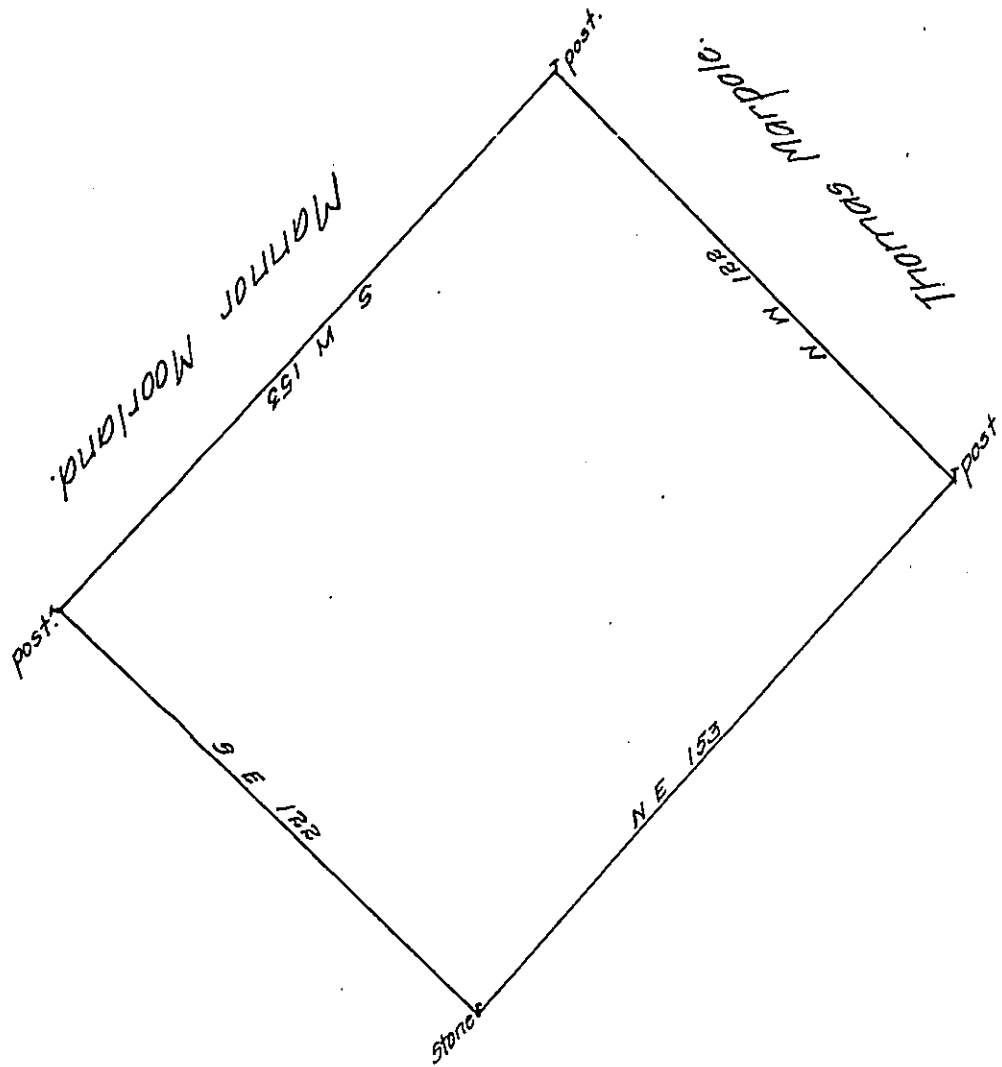


No 5.



Surveyd for Benjamin Charlesworth in right of William Allen a tract of land situate in the County of Philad<sup>a</sup> on a branch of Pene- pack Creek begining at a corner Stone being a corner of — Land thence by the same N E 153 perches to a post thence by Thomas Marpoles land N. W 122 perches to a post Thence by the Manor of Moorland S. W 153 perches to a post thence Land of — S E 122<sup>rs</sup> to ye place of begining Containig <sup>110</sup>~~100~~ acres with allowance of 6 & Cent Surveyd <sup>October</sup>~~August~~ ye 7<sup>th</sup> 1730

By Nicho. Scull.

IN TESTIMONY that the above is a copy of the original remaining on file in the Department of Internal Affairs of Pennsylvania, made conformably to an Act of Assembly approved the 16th day of February, 1833, I have hereunto set my Hand and caused the Seal of said Department to be affixed at Harrisburg, this fifth day of November 1910

*Henry Houck*  
Secretary of Internal Affairs.